



LIBTAYO 
SURROUND[®]

When you need extra support...

LIBTAYO Surround is here to help



LIBTAYO[®]
(cemiplimab-rwlc)
Injection 350 mg



LIBTAYO 
SURROUND[®]

Your doctor is your trusted source for information about your condition and treatment.
But we know you may have other questions.

Our caring *Patient Navigators* can help

Once you are prescribed LIBTAYO, you will have access to our dedicated Patient Navigators, who can provide additional support throughout your treatment journey.

 **LIBTAYO[®]**
(cemiplimab-rwlc)
Injection 350 mg



Financial support

Our Patient Navigators may be able to help you find assistance if you have trouble paying for LIBTAYO. They will check to see if you qualify for the following programs.



Copay Program

You may be eligible to pay as little as **\$0 per month** with the LIBTAYO Surround Copay Program

You may qualify if you:

- ✓ Have private (commercial) insurance
- ✓ Are a resident of the United States or its territories or possessions

Other conditions may apply.

The LIBTAYO Surround Copay Program provides*:

- ✓ Up to \$25,000 in assistance per year for eligible out-of-pocket expenses for LIBTAYO

You pay*:

- ✓ As little as \$0 for LIBTAYO until your expenses reach \$25,000
- ✓ Any additional costs after you reach the program's limit
- ✓ Any non-qualifying expenses, such as supplies, procedures, or other non-product-specific costs

There is no income requirement to qualify for this program

*This program is not valid for prescriptions covered by or submitted for reimbursement under Medicare, Medicaid, Veterans Affairs/Department of Defense, TRICARE, or similar federal or state programs. Not a debit card program. The program does not cover or provide support for supplies, procedures, or any physician-related service associated with LIBTAYO. General non-product-specific copays, coinsurance, or insurance deductibles are not covered. Additional program conditions apply. See LIBTAYO.com for more information.



Financial support

(cont'd)



Patient Assistance Program

If you do not have insurance or your insurance does not cover LIBTAYO, you may be eligible to **receive LIBTAYO at no cost***

You may qualify if you:

- ✓ Are uninsured, underinsured, or lack coverage for LIBTAYO
- ✓ Are a resident of the United States or its territories or possessions
- ✓ Demonstrate financial need based on annual household income criteria

Other conditions may apply.

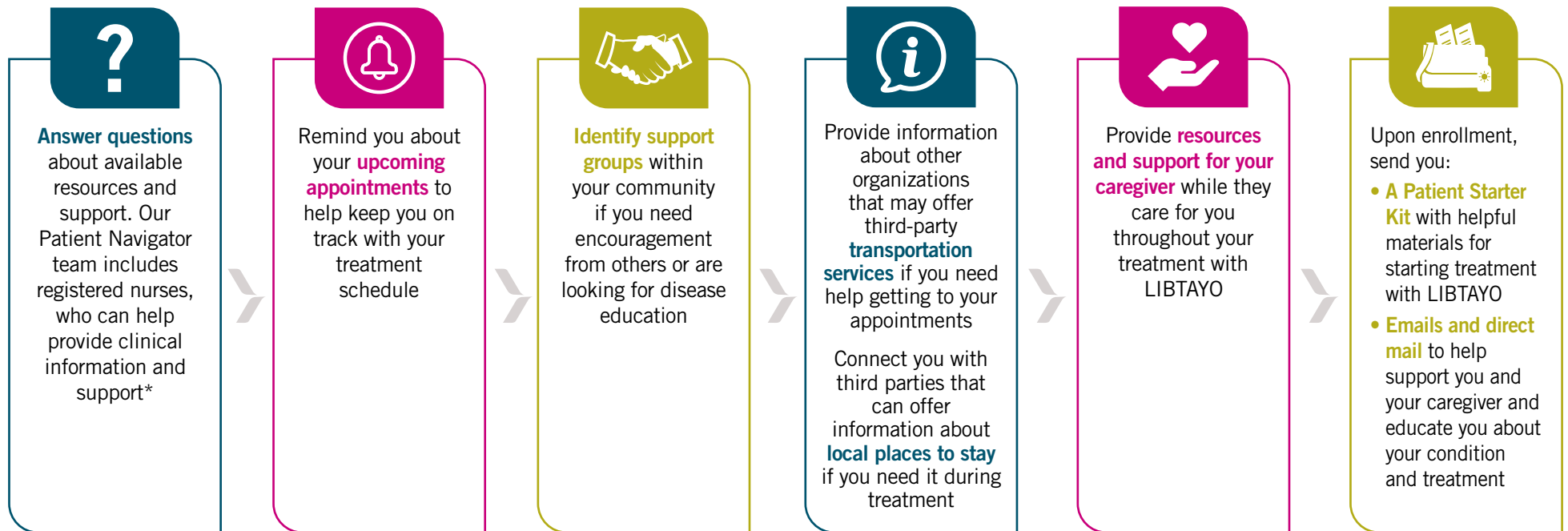
*Eligible patients will be enrolled for up to 12 months; eligible Medicare patients will be enrolled until the end of the calendar year. Patients must reapply annually.

LIBTAYO Surround can help evaluate your eligibility for assistance. We may also be able to identify other third-party financial assistance resources



Additional support

Our Patient Navigators are available whenever you need more information or additional assistance. They can:



*Our registered nurses do not give medical advice. Your doctor is your trusted source for information about your condition and treatment.

You can speak with a Patient Navigator by calling
LIBTAYO Surround at **1.877.LIBTAYO** (1.877.542.8296) Option 1

Enroll

in LIBTAYO Surround and learn
more about available support



To enroll:

- Call LIBTAYO Surround at **1.877.LIBTAYO**
(1.877.542.8296), Option 1

OR

- Visit **LIBTAYO.com** and register online

Speak a language other than English?

We provide assistance in **240 languages** so you can better understand the support we can offer you.